

Floor Plan

Welcome Bienvenue Willkommen Bienvenido Benvenuti



© 2012 Culture and Sport Glasgow (Glasgow Museums)

Welcome to Kelvingrove Art Gallery and Museum.

If you have any queries during your visit, please ask a member of staff at either of the Reception Desks, located on the lower ground floor and in the centre hall. Alternatively, you can ask any of our Gallery Assistants in the galleries.

If you don't want to keep this floor plan, please hand it in to the Reception Desk. We hope that you enjoy your visit and look forward to welcoming you again.



KEY

- 1 Kelvingrove Art Gallery and Museum
www.glasgowmuseums.com
- 2 Riverside Museum
www.glasgowmuseums.com
- 3 Hunterian Museum and Art Gallery
www.hunterian.gla.ac.uk
- 4 Kelvin Hall International Sports Arena
www.glasgowclub.org

Open daily 10.00am–5.00pm, except Friday and Sunday 11.00am–5.00pm.

Closed 25, 26 December, 31 December afternoon and 1 and 2 January.

Free entry, wheelchair access, free daily guided tours.

Kelvingrove Art Gallery and Museum,
Argyle Street, Glasgow G3 8AG, Scotland
Phone +44 (0) 141 276 9599 Fax +44 (0) 141 276 9540
Text phone +44 (0) 141 276 9500/9511

www.glasgowmuseums.com



Giuseppe Baldan,
La Faruk Madonna,
in the Every Picture
Tells a Story gallery



Finlay Gillies
launching a
mailboat, St Kilda,
in the Cultural
Survival gallery



Spitfire LA198, 602
(City of Glasgow)
Squadron,
in the West Court



Sir Henry Raeburn,
The McNab,
in the Scottish
Identity in
Art gallery



FCB Cadell,
*Interior – The
Orange Blind*
in the Scottish
Colourists gallery



Claude Monet,
Vétheuil,
in the French
Art gallery



Sir Roger the
elephant,
in the West Court



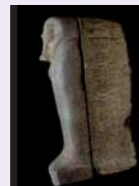
Charles Rennie Mackintosh,
The Wassail,
in the Mackintosh and
the Glasgow Style gallery



Salvador Dali,
*Christ of St
John
of the Cross*,
on the South
balcony

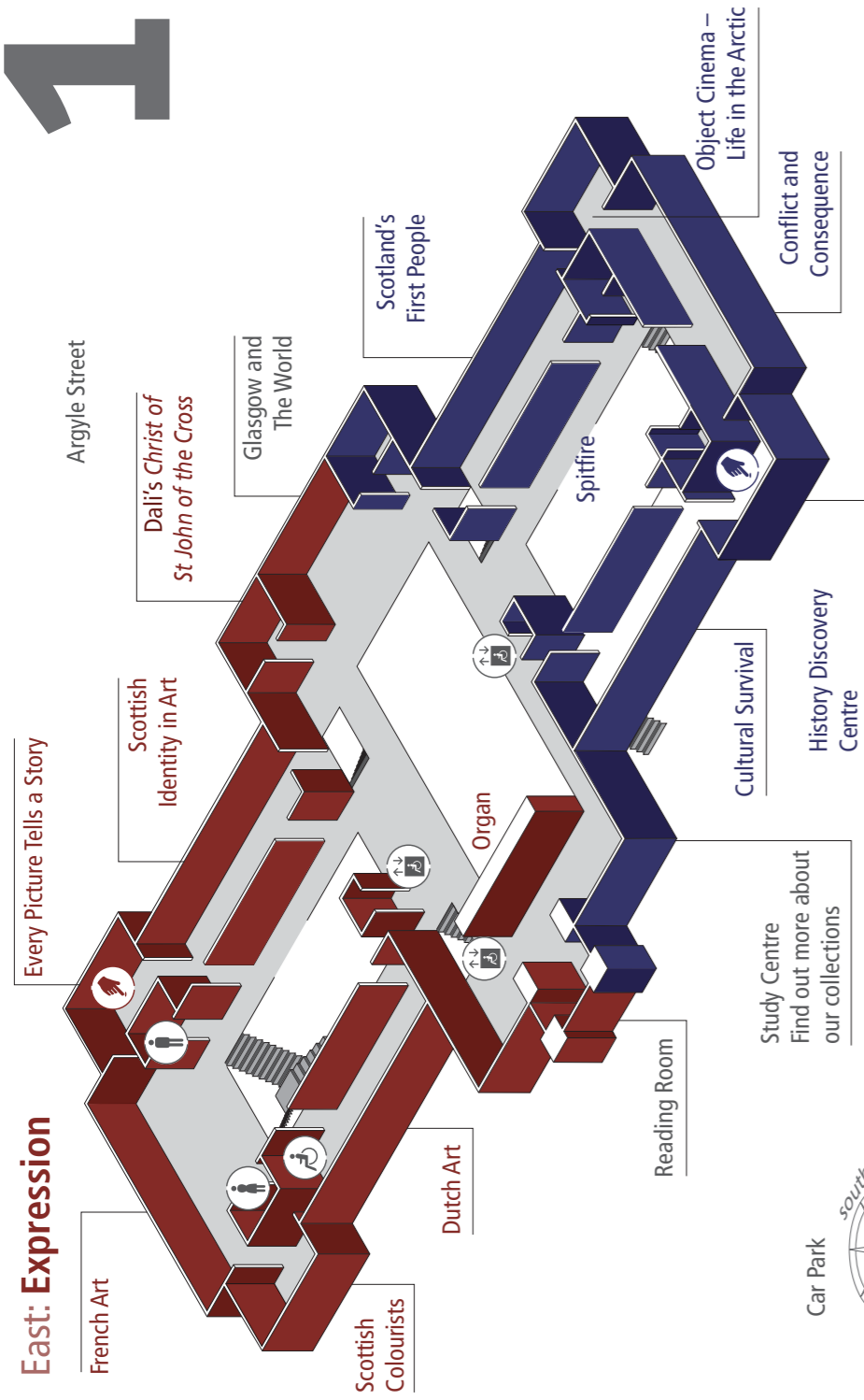


Sarcophagus
of Pa-Ba-Sa,
in the Ancient
Egypt gallery

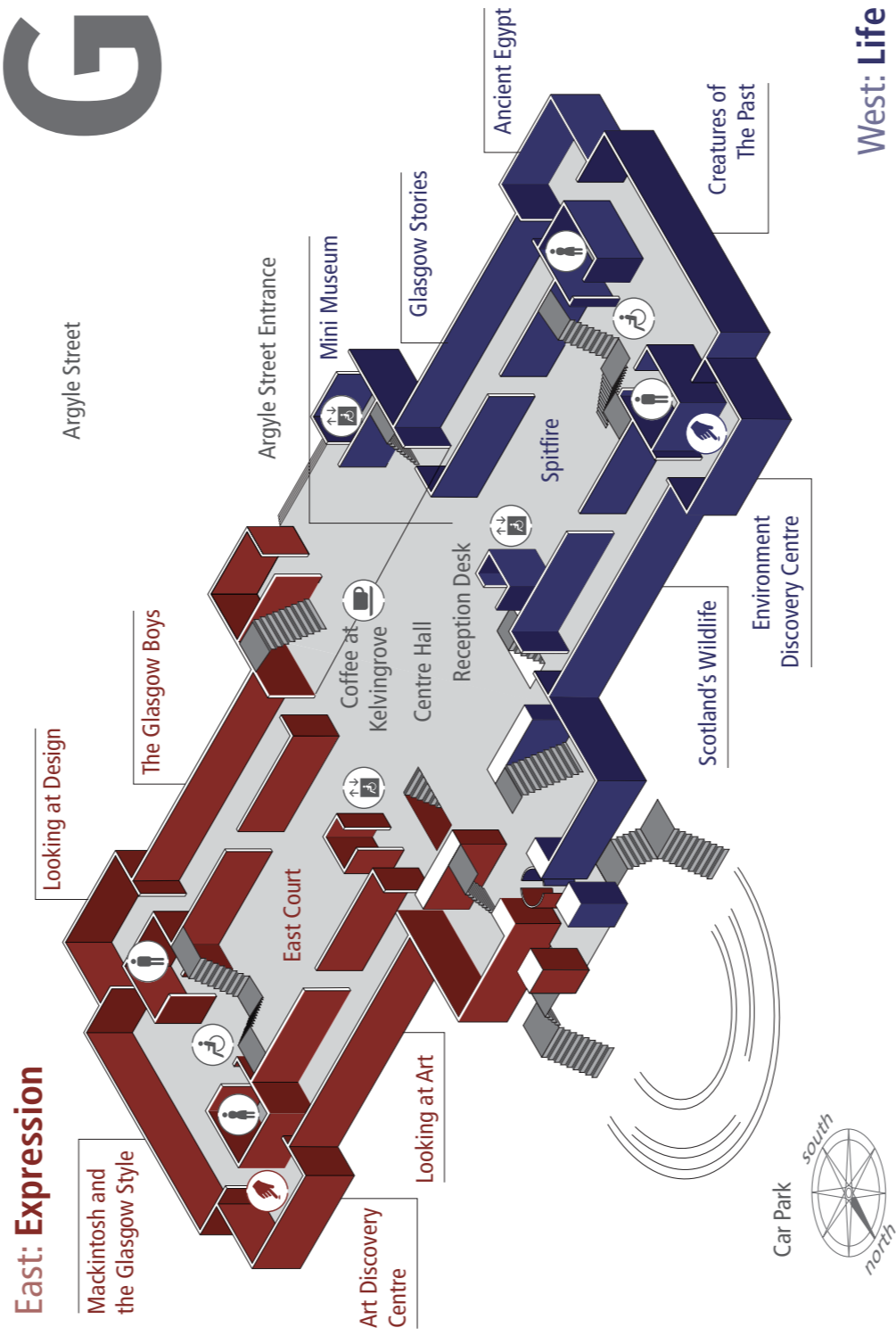


1

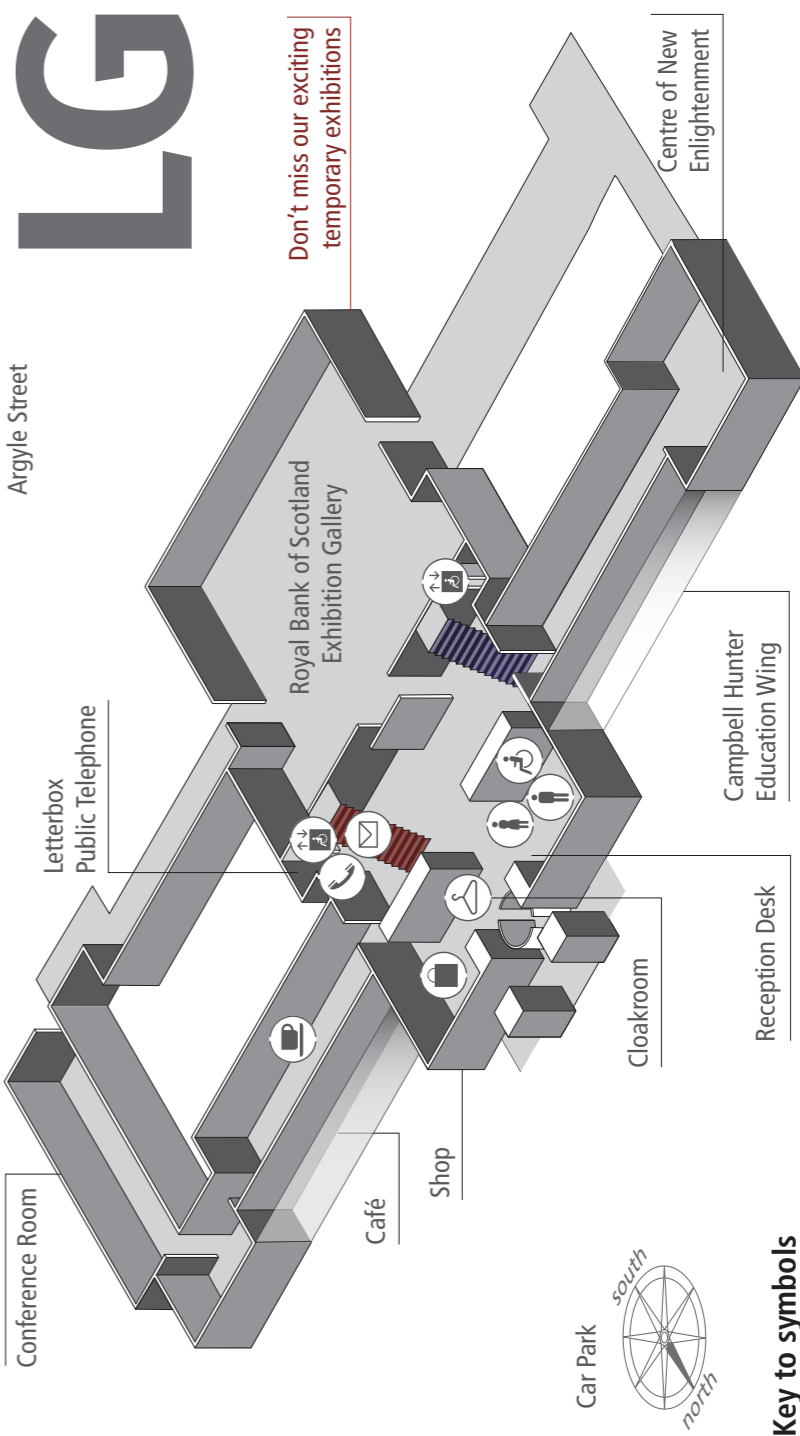
East: Expression



East: Expression



LG



Key to symbols

- Female Toilets
- Male Toilets
- Café
- Shop
- Accessible Lift
- Coffee at Kelvingrove
- Accessible Toilets
- Interactive Area
- Cloakroom
- Public Telephone
- Letterbox